



El Ñeque :: 0.5 each :: \$285K each

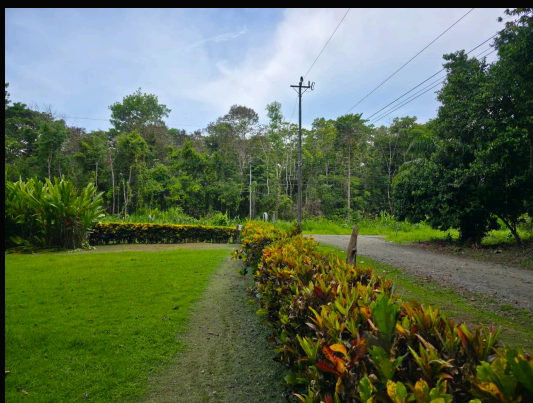


This NEW LISTING includes TWO lots in El Ñeque, close to town and beside the highway.

One lot is 4,768 sq m and the second, corner lot is 4,808 sq m. The contiguous lots are on flat ground ideal for home construction or commercial development.



The lots are planted in a variety of fruit trees, including lime, mango, lychee, peach palm. Several sea grape trees are distributed around the grounds and draw in scarlet macaws.



The grounds are immaculate with lush green lawn, a variety of tropical ornamentals and fifteen years of top shelf landscaping and grooming.



Both properties are bounded by paved Highway 245, and one is a corner lot that also bound El Ñeque Road.



Puerto Jiménez, the county seat, is just 10 minutes away with full small-city services, including an airport with ten commercial flights a day, hospital, and goods and services.



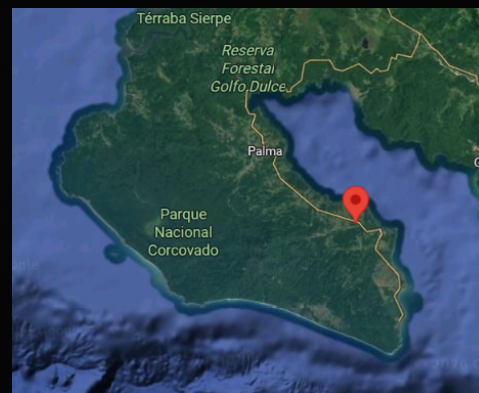
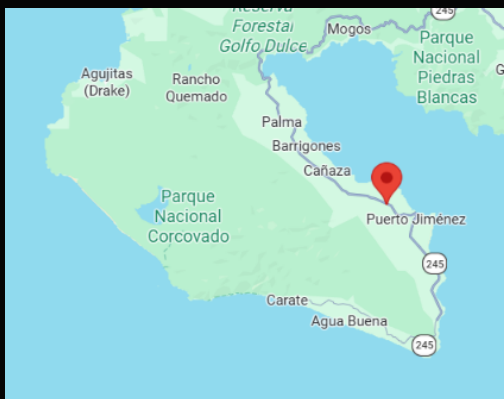
Grid power runs right alongside the properties making them ready to hook up. Though public water is not available, ground water is abundant and a shallow hand dug well (20 feet deep) will provide high quality ground water for full residential and / or commercial needs.



The Osa Peninsula is Costa Rica's final frontier and the jumping off spot for eco adventures with world class beaches just a few miles away from these listings, not to mention, surfing, deep-sea fishing, bird watching, horseback riding, and Corcovado National Park, the crown jewel of Costa Rica's national park system and a World Heritage Site.

[SEE VIDEO HERE](#)

Call or write today for more information or to schedule your showing.



Paul Collar
+506 8704-0027
info@osapenrealty.com

Pamela Mesén
+506 8882-2372
info@osapenrealty.com

